

TUNE 1/2 STEP DOWN

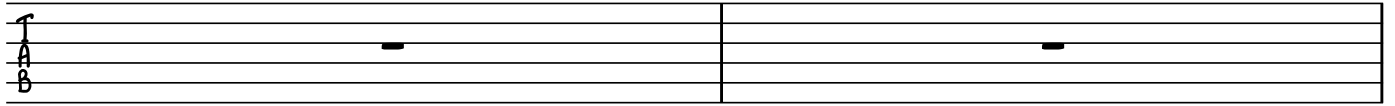
# LITTLE WING

TRANSCRIBED BY JEFF LAUFFER

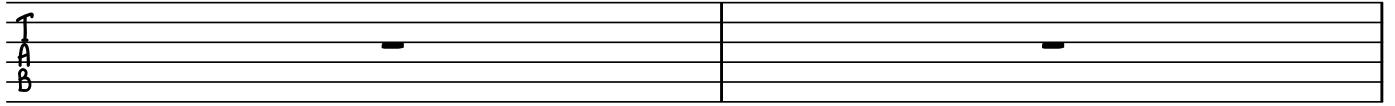
JIMI HENDRIX

The guitar tablature for "Little Wing" is presented in a standard six-line format. The key signature is one flat (Bb), and the time signature is 4/4. The score is divided into measures, with measure numbers 3, 6, 8, 11, 14, 16, 19, and 23 indicated on the left. Chord diagrams are placed above the staff, including Em7, Am7, G, Bm7, Bb, C6, D, and F(sus2). The tablature includes various guitar techniques: bends (marked with a 'b' and a curved line), trills (marked with 'tr'), and palm muting (marked with 'pm' and a dashed line). Fret numbers are written on the lines to indicate fingerings. The piece concludes with a double bar line and a final chord diagram.

2 27



29



31



41

